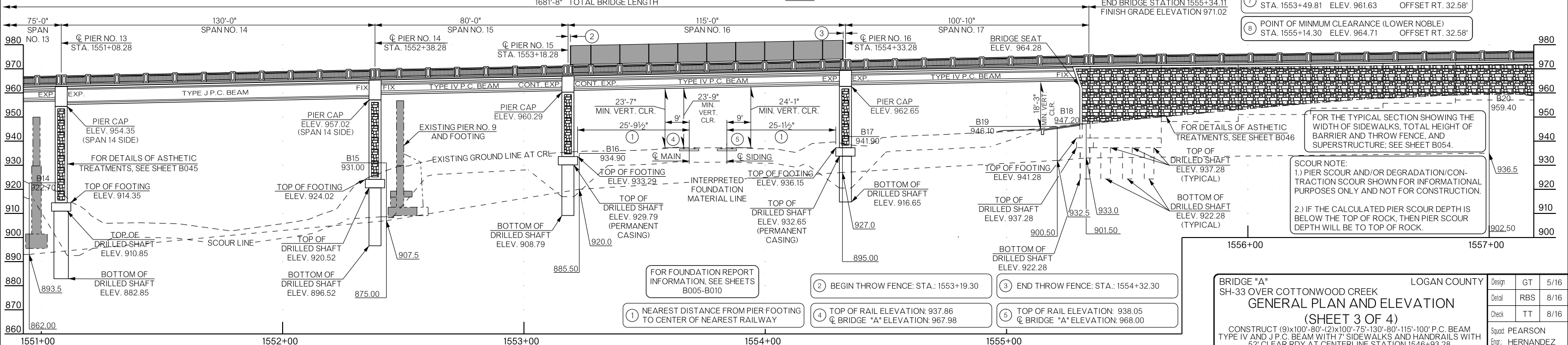
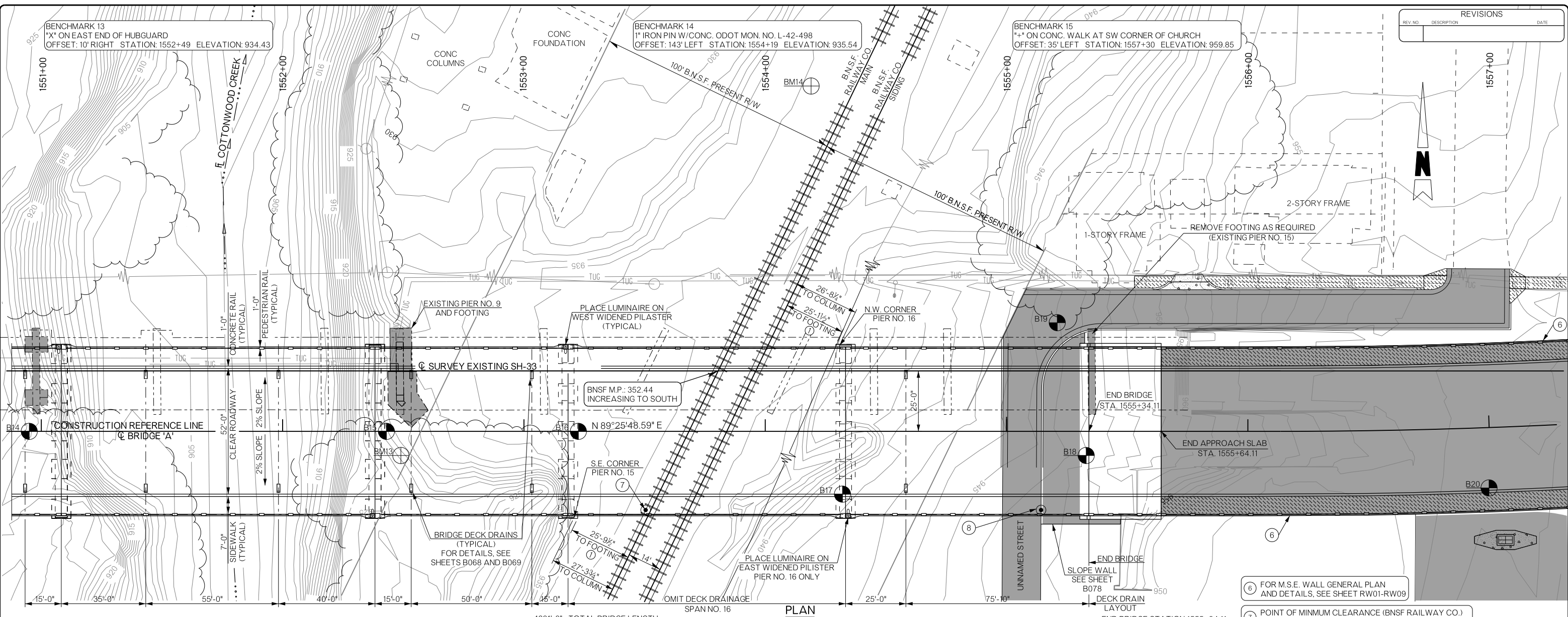


REVISIONS		
REV. NO.	DESCRIPTION	DATE



BRIDGE "A"
SH-33 OVER COTTONWOOD CREEK
GENERAL PLAN AND ELEVATION
(SHEET 3 OF 4)

LOGAN COUNTY

CONSTRUCT (9)x100'-80"-(2)x100'-75'-130'-80"-115'-100" P.C. BEAM
TYPE IV AND J.P.C. BEAM WITH 7' SIDEWALKS AND HANDRAILS WITH
52' CLEAR RY. AT CENTERLINE STATION 1546+93.28

Design GT 5/16
Detail RBS 8/16
Check TT 8/16

Squad PEARSON
Engr: HERNANDEZ

STATE OF OKLAHOMA DEPARTMENT OF TRANSPORTATION

JOB/PCEN: 2186(04) SHEET NO. B003